



Introduction

To create a community-led pavilion building that supports long-term growth of sports and learning groups for the local surrounding areas.

Introduction

The village of Chiddingfold would like to provide facilities on the Combe Common Recreation Ground to support both the Chiddingfold Youth Football Club, the Chiddingfold Scout Group and the wider Chiddingfold Community in order to promote sports, recreation and well-being for the under 16s within the village and surrounding areas.

A working group has been set up to advise the Chiddingfold Parish Council with the aim to create a special community-led project that seeks to inspire residents to enjoy sport and recreation, in a beautiful building and setting.

The Chiddingfold Parish Council and the Combe Common Working Group are working with Open Design Studio and Smith Simmons & Partners to design a high-quality community pavilion building with site-wide improvements and facilities for the Chiddingfold youth community.

Architecture and design services are provided by Open Design Studio with support from planning consultants Smith Simmons & Partners.

This community engagement event is to show you, the Chiddingfold community, the exploration that has been carried out to date and get feedback on the proposed uses for the site, pavilion building and suggested building locations.

Project Brief / Vision

The Combe Common Recreation Ground is an attractive, large open grassed area surrounded by beautiful ancient woodland and community allotment plots to the East and Combe Lane to the South. A line of mature trees along the southern boundary provide a natural edge between the grounds and Combe Lane.

Centrally, the grassed area has been levelled to provide space for football pitches which suffer from drainage issues in winter months. An informal parking area adjacent to the road provides adequate parking generally but becomes overwhelmed on training and match days resulting in cars parking in the road increasing risk to other road users.

The Chiddingfold Football Club is based at the Coxcombe Lane Recreation Ground. The club caters for the over 16s and adult teams. This site has its own pitches and supporting facilities. In contrast, the home of Chiddingfold Youth Football Club is the Combe Common Recreation Ground, where the grass pitches become muddy in wet winter months, parking causes problems to other village users on match days and there are no supporting club facilities or storage for equipment.

The Chiddingfold Scout Group currently use other local facilities but has no base from which to support scouting activities.

A 20ft shipping container is located at the Combe Common Recreation Ground to provide the storage for the groups' equipment.

The recreation ground is regularly used by dog walkers and families for recreational enjoyment of local open space.

This project will include a site-wide masterplan incorporating a club house building, external site facilities and improvements to the drainage of the football pitches and parking arrangements in order to support both groups and promote well-being of other Chiddingfold youth residents.

The scheme will create a safe and suitable hub from which the Chiddingfold Youth Football Club can provide training, matches and social events to promote youth football within the village and surrounding areas.

The building will be the new headquarters for the Chiddingfold Scouts Group to promote youth recreation and learning in a fun, educational and interactive facility.

The project will provide high-quality, fully accessible facilities that include the storage requirements for both groups. Proposals will be flexible in order to accommodate potential secondary users, such as the allotment plot holders, families or groups booking birthday party venues and indoor fitness or learning sessions. The aim is to benefit local residents and to have a positive long-lasting impact on the wider community.

Design proposals will evolve in conjunction with a carefully considered approach to the landscape, environmental design and operational use to ensure longevity for the local community end users.



Photograph of Combe Common Recreation Ground, Chiddingfold



Aerial photograph of Chiddingfold and the site circled in red

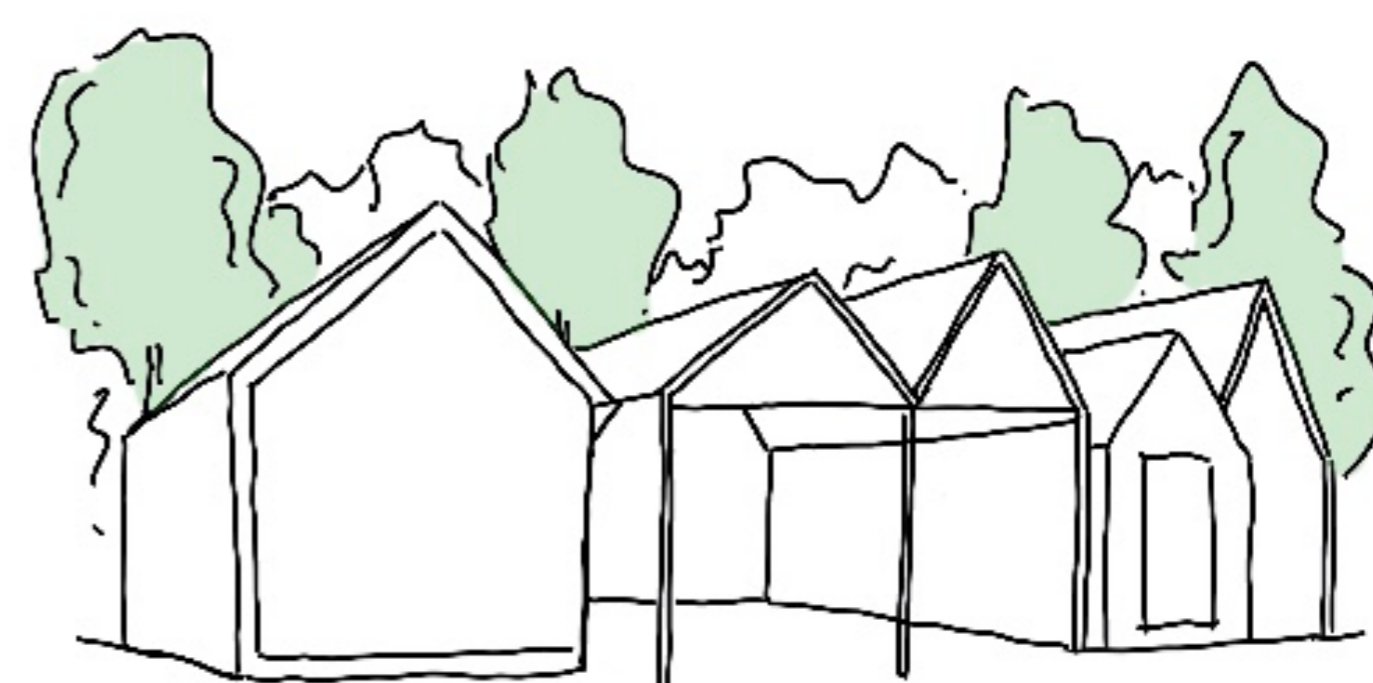


Project Design Objectives & Identity

One Building. Multiple Users. One Community.

What is the pavilion offering the community?

- Support youth football in the village and surrounding areas
- Create a safe and inspiring headquarters for the Chiddingfold Scout Group
- Provide an engaging community space for local groups and families
- Enhance the natural surroundings with a complimentary structure in a beautiful setting



A building with a light touch on landscape and the natural environment

- Combining peoples' skills and interests to enhance the experience
- Exposing individuals to tactile experiences and connecting them to the outdoors

One building / multiple users

'HUT' = shelter

- Physical
- Emotional

'The HUT' (s)

the scout 'HUT'

Bee hives - collection of individuals to create a community

Notion of a building that is found

- Providing a sense of adventure and discovery
- Creating a unique yet effective learning environment

allotment sheds 'HUTs'

<h4>Community Youth Hub</h4> <ul style="list-style-type: none"> Community-led pavilion to support the long-term growth of local youth sports, recreation and learning Provide a safe space for individuals and groups to thrive in a natural setting High-quality fully accessible facilities Facilities that benefit local residents and have a positive long-lasting impact on the wider community 	<h4>Light Touch On The Landscape</h4> <ul style="list-style-type: none"> A building with a low carbon lifetime footprint Considerate design to minimise impact on the rural character of the site 	<h4>Materials</h4> <ul style="list-style-type: none"> Considerate selection of beautiful building materials to create high quality special places Good quality materials that are low maintenance to minimise ongoing costs Hard wearing materials that are suitable for high footfall 	<h4>Celebrate Structure</h4> <ul style="list-style-type: none"> Celebrating the structure by exposing construction materials can contribute to a positive visual impact of the building in the setting 	<h4>Low Cost Low Maintenance</h4> <ul style="list-style-type: none"> Well insulated air tight envelope to minimise use of space heating Good levels of natural daylight to minimise the use of artificial lighting Low tech construction to keep costs down Sustainable design to future proof Sustainable energy strategy to minimise the impact of the building on the environment and reduce running costs
--	---	---	---	--

Primary Users

Facilities to support the Chiddingfold Youth Football Club & the Chiddingfold Scout Group.

Day in the Life - Junior Football Player

As one of our primary users, it is essential we understand the football club members' journey and how they will use the site. This can inform specific facilities required for the football club and spatial arrangements and building layouts.



Illustrative journey

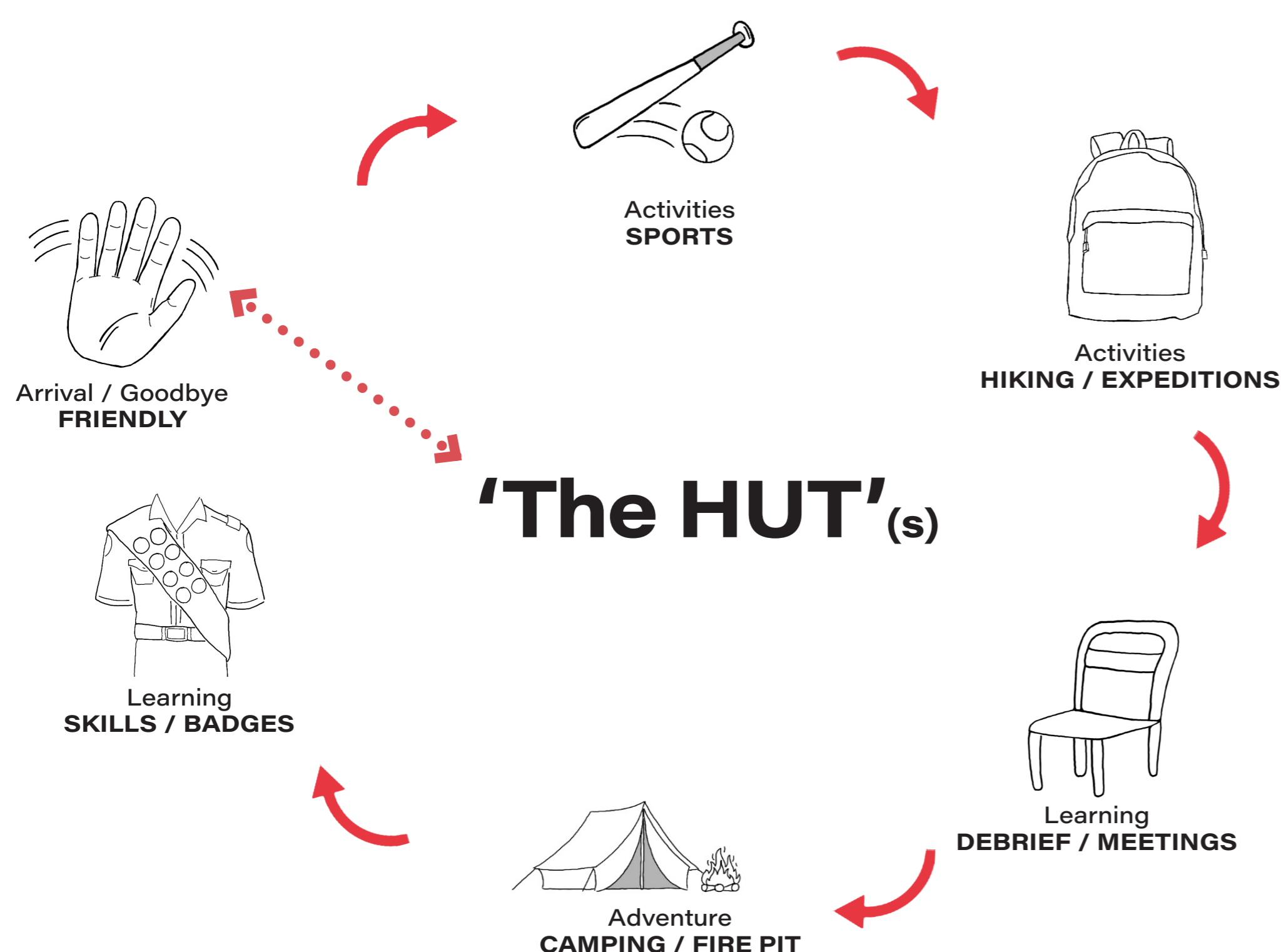


Photograph of Chiddingfold Youth Football Club



Day in the Life - Scouts Club

Our second primary user group is the Scouts which have a more complex schedule with varying activities and meetings. It is equally important to understand the scouts experience and movements to establish the facilities required internally and in conjunction with their outdoor activities.



Illustrative journey

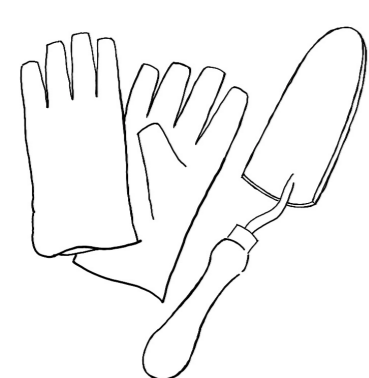


Photograph of Chiddingfold Scout Club



Secondary Users

Contribute positively to the local community by catering to secondary users.



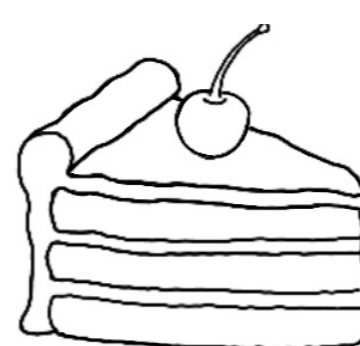
Allotment Users / Planting

- Integration of bee, bug & bird boxes to enhance wildlife and promote fruit & vegetable growing
- Wider community involvement and support with low maintenance responsibilities by volunteers
- Possible collaboration with local nursery / scout groups
- Creating an educational space / area
- Access to WC facilities



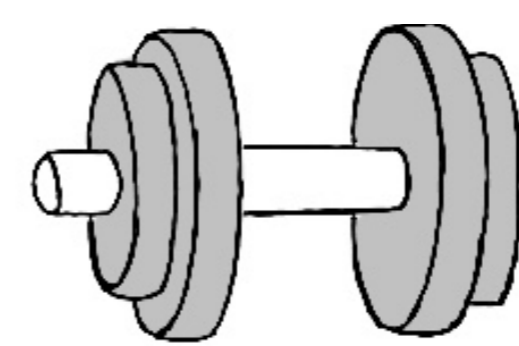
Dog Walkers

- Access at all hours
- Outdoor tap / shower
- Dog drinking bowls
- Appropriate waste bins
- Access to outdoor WC facilities



Celebrations / Parties

- Families / smaller groups
- Informal outdoor gatherings
- Potential to hire out internal facilities
- Allocation on site for outdoor areas of use
- Standing shelters
- Built in outdoor BBQs
- Access to outdoor WC facilities



Personal Fitness

- Outdoor permanent gym equipment
- Allocation in safe zone on site potentially in close proximity to play area / play ground
- Individual personal outdoor fitness using outdoor gym equipment
- Other local gym instructors / trainers to have use of free open space and use of equipment
- Access to outdoor WC facilities



Young Children / Families

- Outdoor permanent playground equipment
- Wooden play trail
- Potential access for local schools and village nursery
- Access for families / public and children
- Allocated area for play in a safe zone on site
- Access to outdoor WC facilities



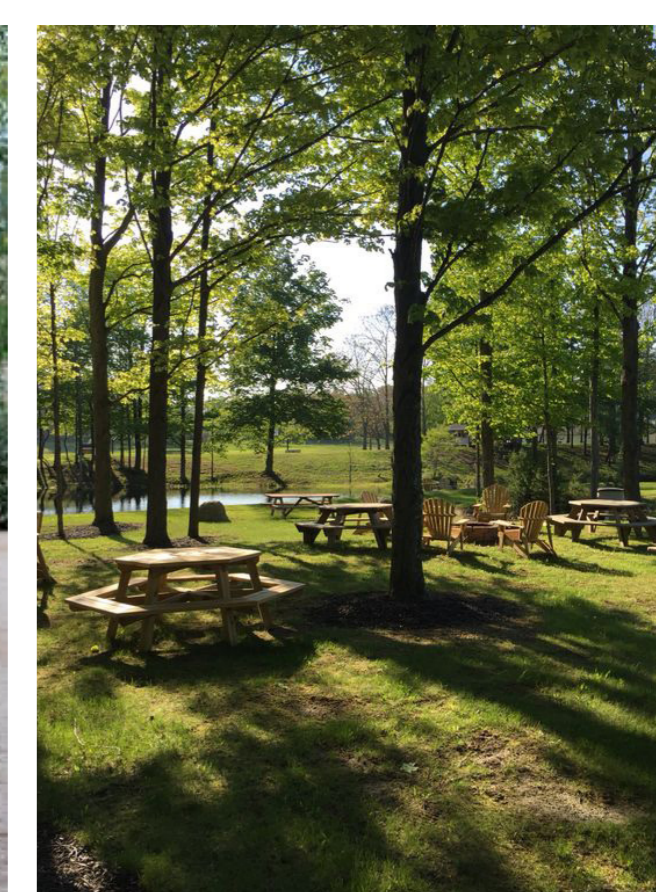
ALLOTMENTS
facilities to support the allotment users could include water collection, WC facilities and pop up cafe for refreshments



DOG WALKERS
outdoor taps / water bowls / WC / pop up refreshments / appropriate bins



PLAY TRAIL
wooden play trail to promote the use by young children and their families



PICNIC BENCHES & BBQS
picnic benches, BBQs and standing shelters to promote informal use for gatherings and birthday parties



SKATE PARK
a village skate park for use by local children and their families



PERSONAL FITNESS
informal use of outdoor space for personal fitness or fitness classes supported by sheltered areas for hot or wet weather. Flexible internal spaces for hire

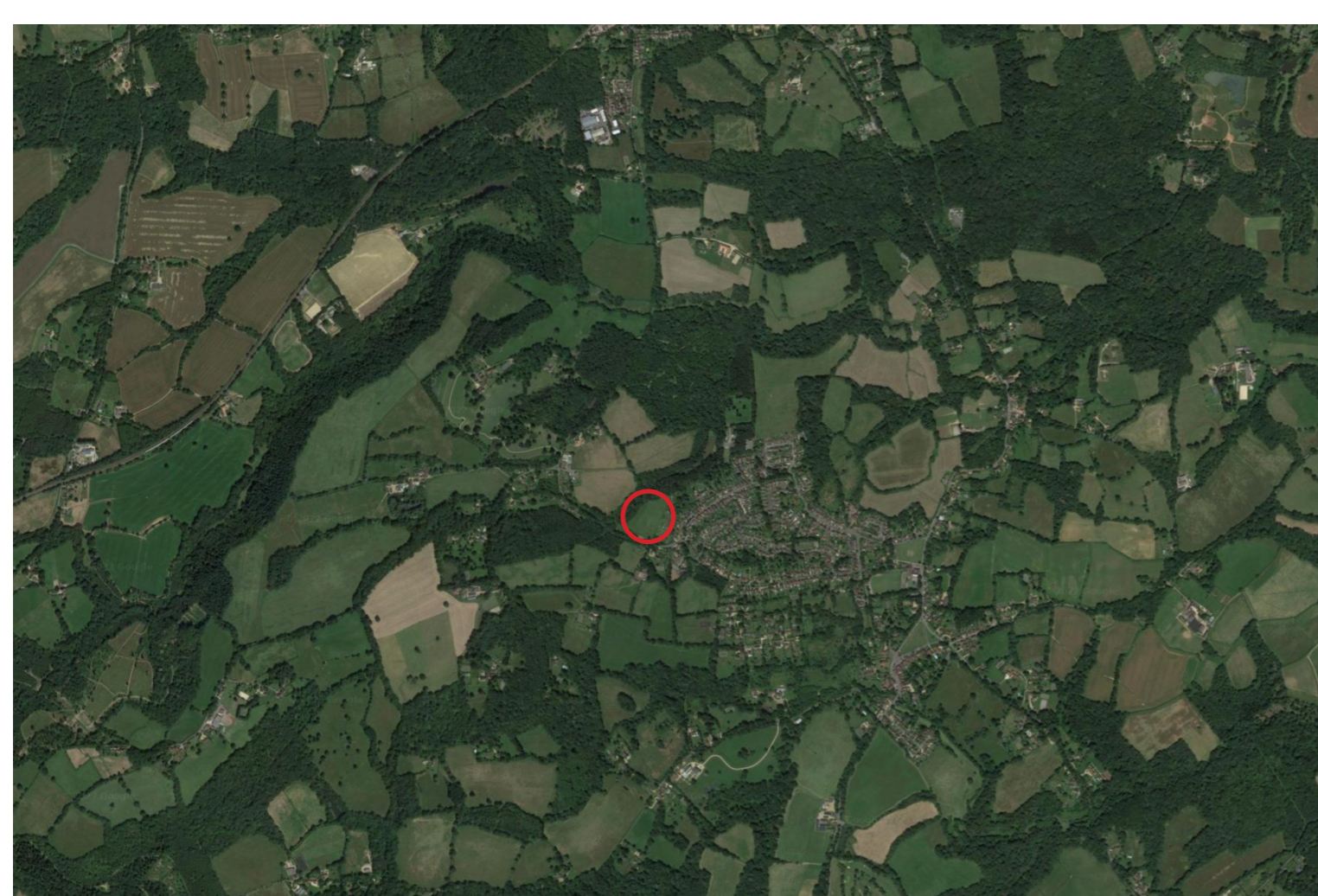


LEARNING
integration of bug, bee and bird boxes to promote biodiversity for the allotments and learning about wildlife and fruit/vegetable growing



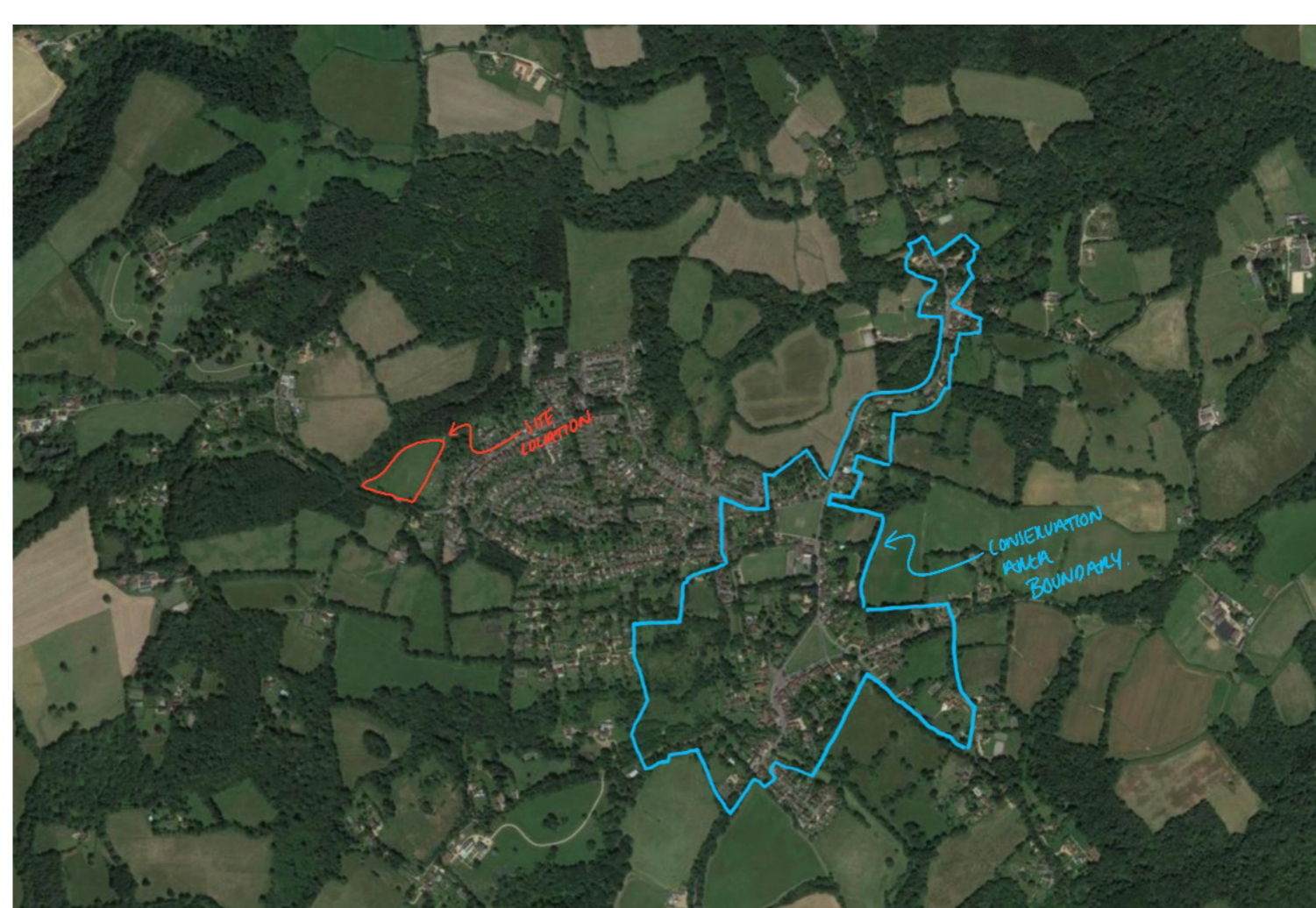
Site Analysis

Provide a long-lasting positive contribution to Chiddingfold and surrounding areas.



Key
○ Site Location

Site Location
Combe Lane Recreation Ground,
Combe Lane,
Chiddingfold,
Godalming, GU8 4QR



Key
■ Site Location
■ Conservation Area

Parish Map and Conservation area

- Chiddingfold is located in Waverley Borough in Surrey
- The Chiddingfold Conservation Area is formed around a village green
- Chiddingfold is located in an area of stunning countryside and has surrounding agricultural use
- The site is not located within the conservation area



Key
■ Site Location
■ Local green spaces
○ Distances

1. Chiddingfold Green
2. St Mary's Churchyard
3. Coxcombe Lane Recreation Ground
4. The Cricket Ground
5. Combe Common Recreation Ground
6. The Chiddingfold Village Cemetery

Surrounding Green Spaces

- Multiple green spaces on the East side of the village
- Highly valued different facilities for the community

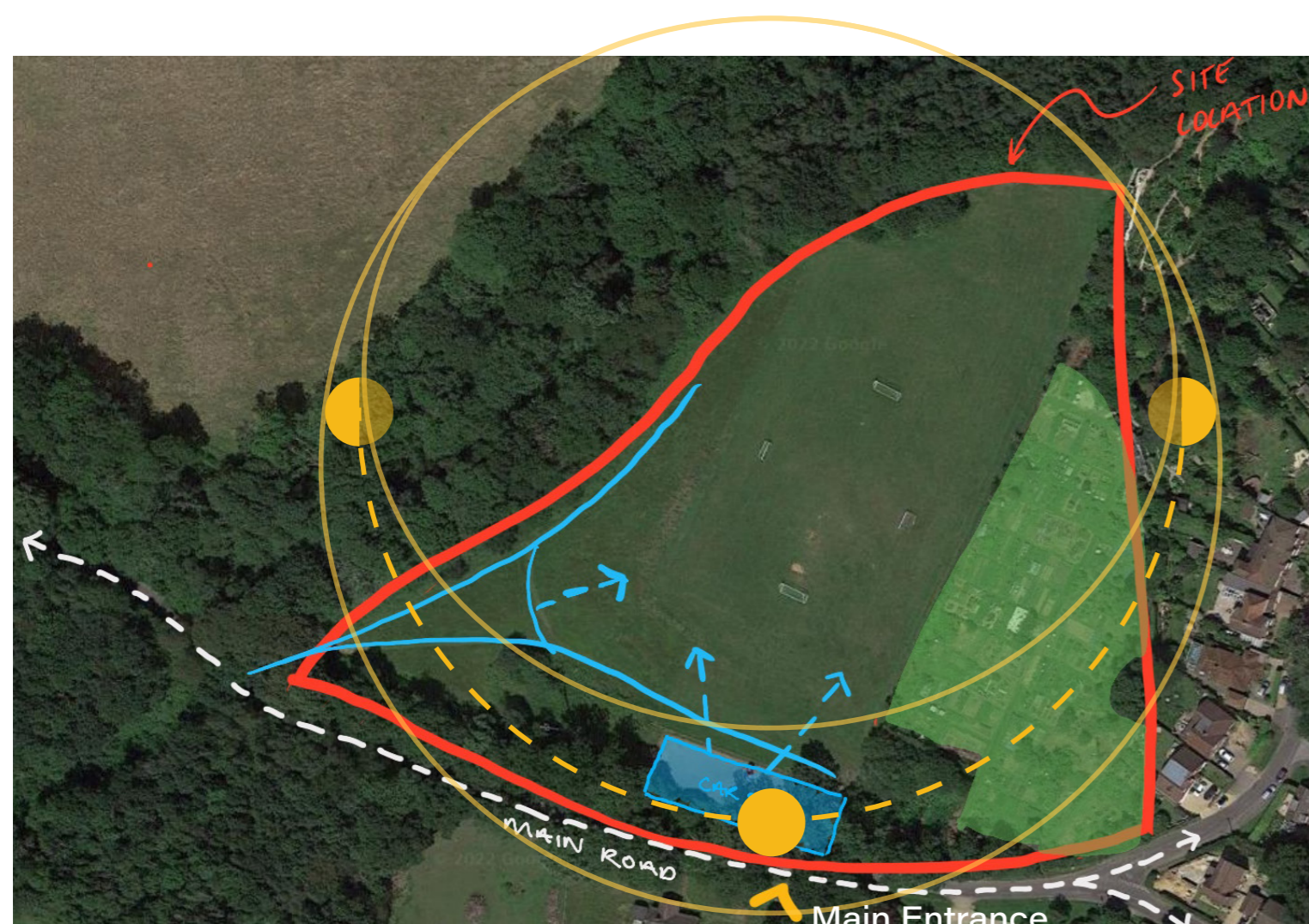


Key
■ Site Location
■ Local Cricket Club
■ Gym Facilities
■ Adult Football Club
■ Village Hall

- The Little Gym Godalming
- Chiddingfold Cricket Club
- Chiddingfold Football Club
- Chiddingfold Village Hall

Surrounding Facilities

- Multiple sporting facilities located around the village



Key
■ Site Location
■ Sun Path Diagram
○ Main Road
■ Allotment Grounds
■ Car Park & Access

Site Plan

- The vehicular entrance and car park are located to the South East corner
- Mature trees and hedgerows on the North, West and South boundaries
- Allotment plots on the East side of the site
- The site is open and will have good levels of natural light and sunlight



Key
■ Site Location
■ Car Park/Access
○ Main Road
■ Allotment Grounds

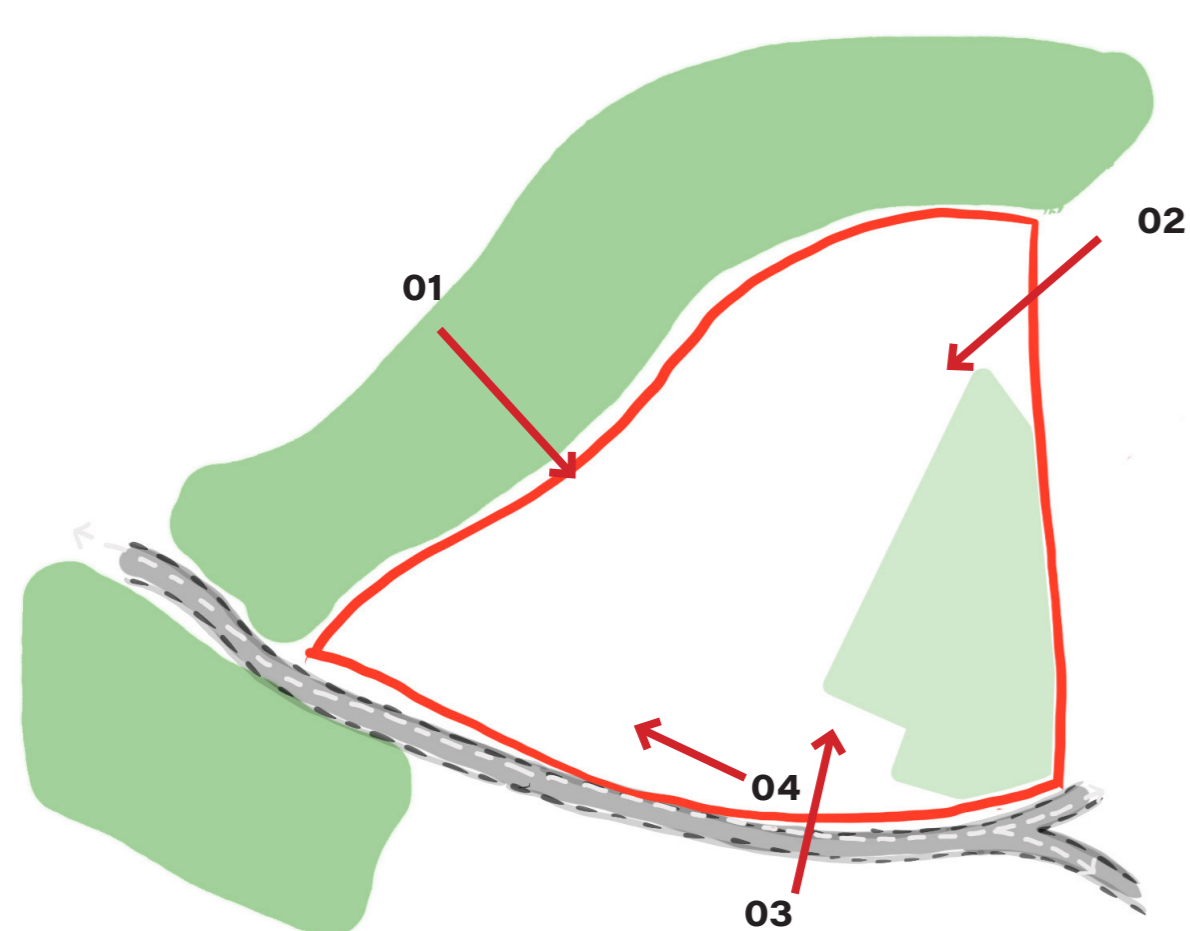
Access

- Primary access from the car park on the South from Combe Lane
- Pedestrian entrance points from the South West and South East corners of the site



Site Photographs & Key Views

A beautiful countryside setting, enhanced with an exemplary high-quality building.



Key plan showing where views are taken



View 01: Existing view along perimeter of grounds on west side



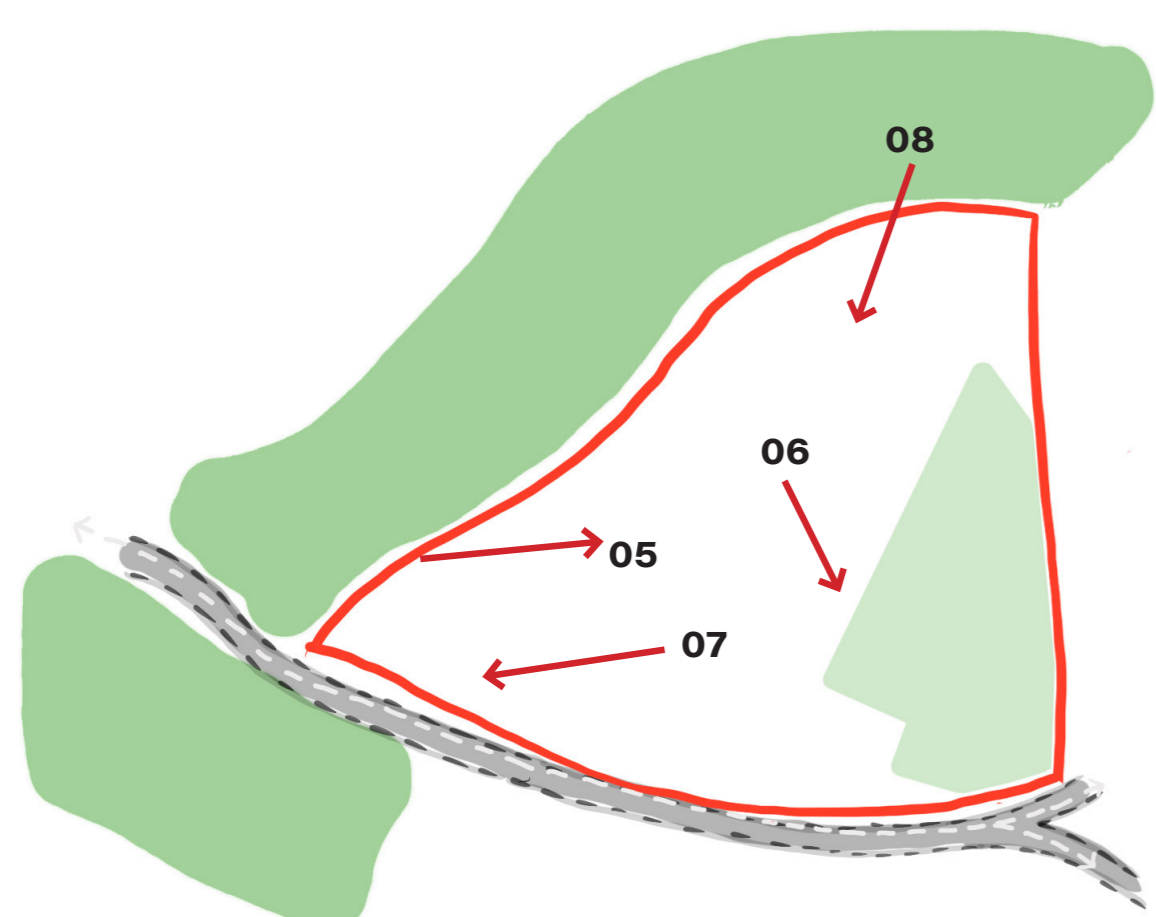
View 02: View of grounds from north side facing south



View 03: View at the south of site in car park looking north



View 04: View of existing car park located south of grounds



Key plan showing where views are taken



View 05: Existing view along west side of site perimeter



View 06: View of grounds on far west corner of site



View 07: View from west side facing south on site



View 08: View from north of site perimeter facing south



Connectivity & Parking

Enhance site access to improve user safety and encourage active lifestyles and well-being.



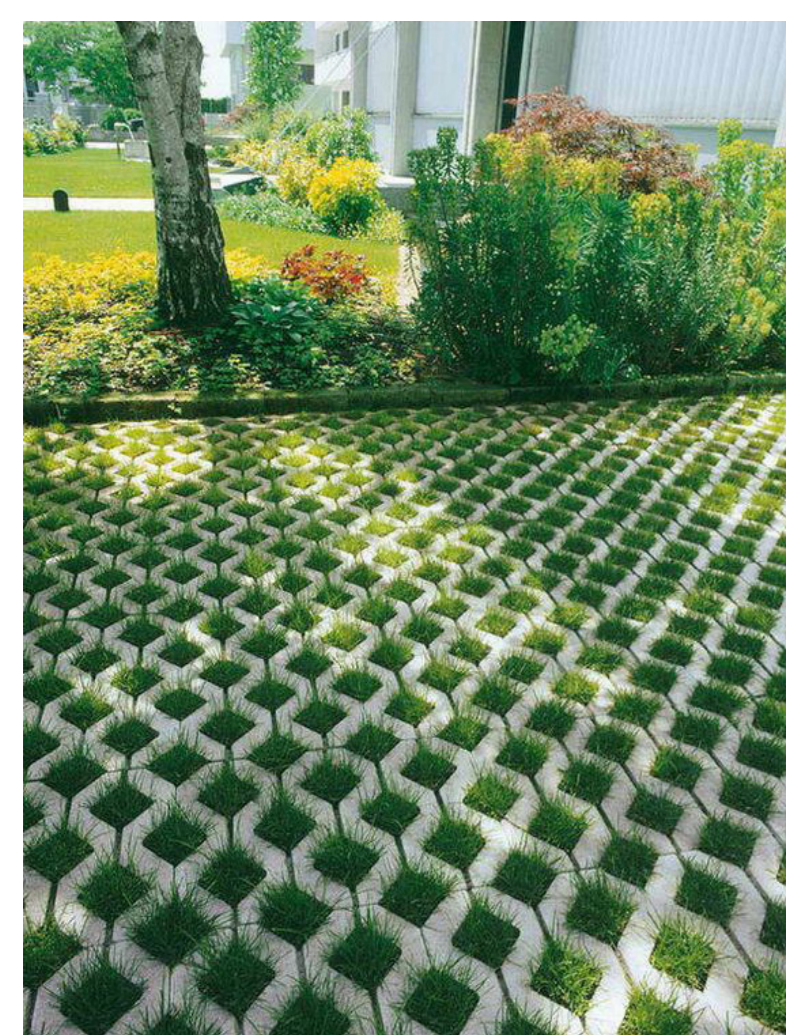
- Key**
- Site Location
 - Public Footpaths
 - Main roads
 - High street/busier areas
 - Ancient woodland
 - Ancient/semi-natural
 - Not in the greenbelt

Surrounding Access

- Combe Lane sits along the southern boundary of the site.
- Combe Lane is a key route into the village from the North
- Cars can travel along this route quite fast
- When parking overflows onto Combe Lane, visibility is greatly reduced making use by pedestrians and cyclists more dangerous
- A footpath from the southern part of the village arrives on Combe Lane at the South East corner of the site
- There are no public footpaths across the site but informal footpaths can be seen in aerial photos

Parking Bays & Precedents

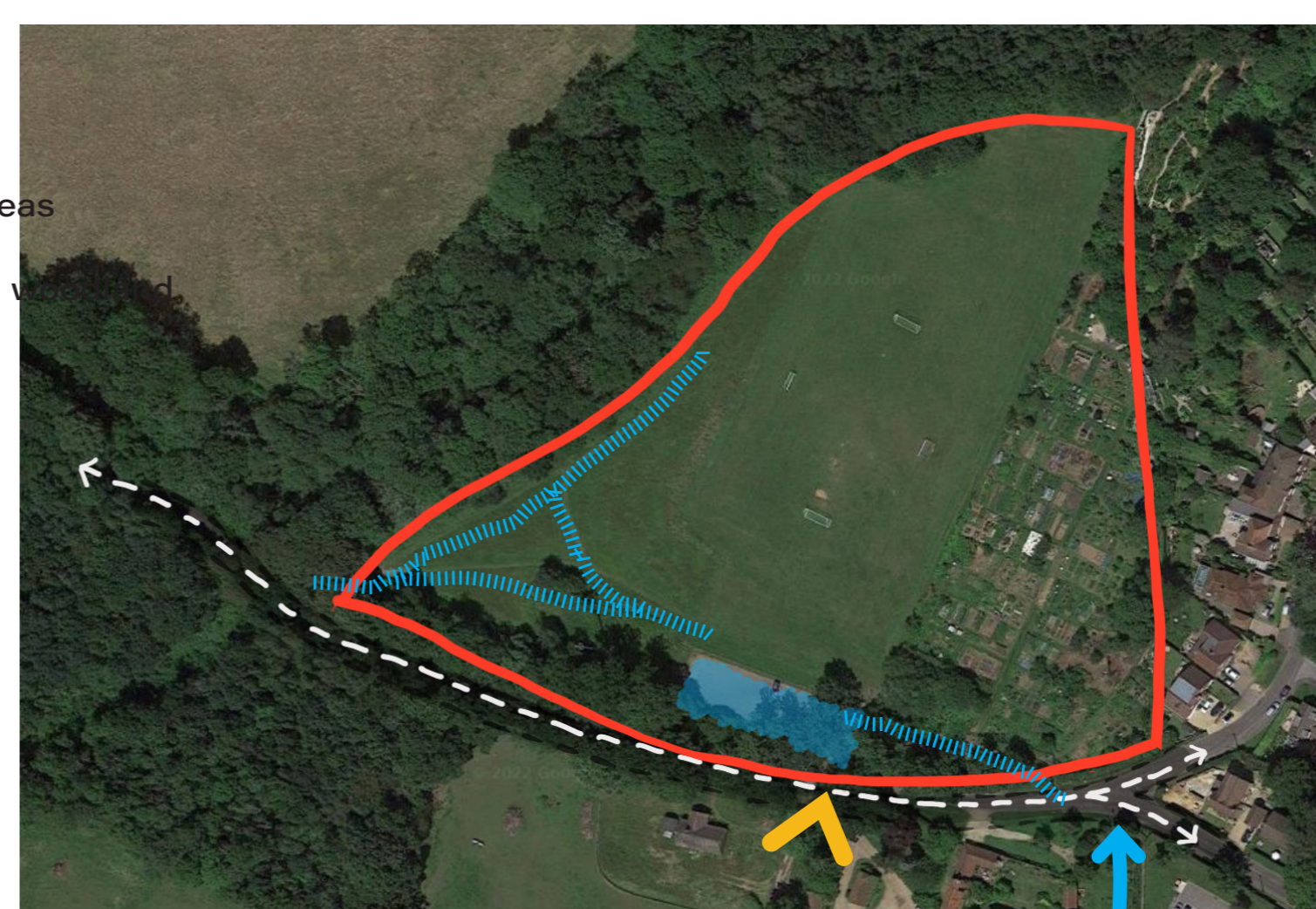
- Parking on site is currently overwhelmed
- On match days parking spills out onto the road creating blind spots for cyclists and pedestrians
- Marking out car park bays will ensure the car park is used in the most efficient way
- Improved car park facilities will remove the need to park on the road to improve road user safety
- Providing good levels of cycle parking and a good pedestrian entrance will encourage users to walk or cycle reducing the number of cars on site



Grasscrete surfacing is hard wearing, permeable and has grass growing for a more biodiverse finish than tarmac



Clearly marked parking bays to use parking space effectively.



- Key**
- Site Location
 - Combe Lane
 - Vehicular Entrance
 - Car Park
 - Public Footpath
 - Informal Site Footpaths

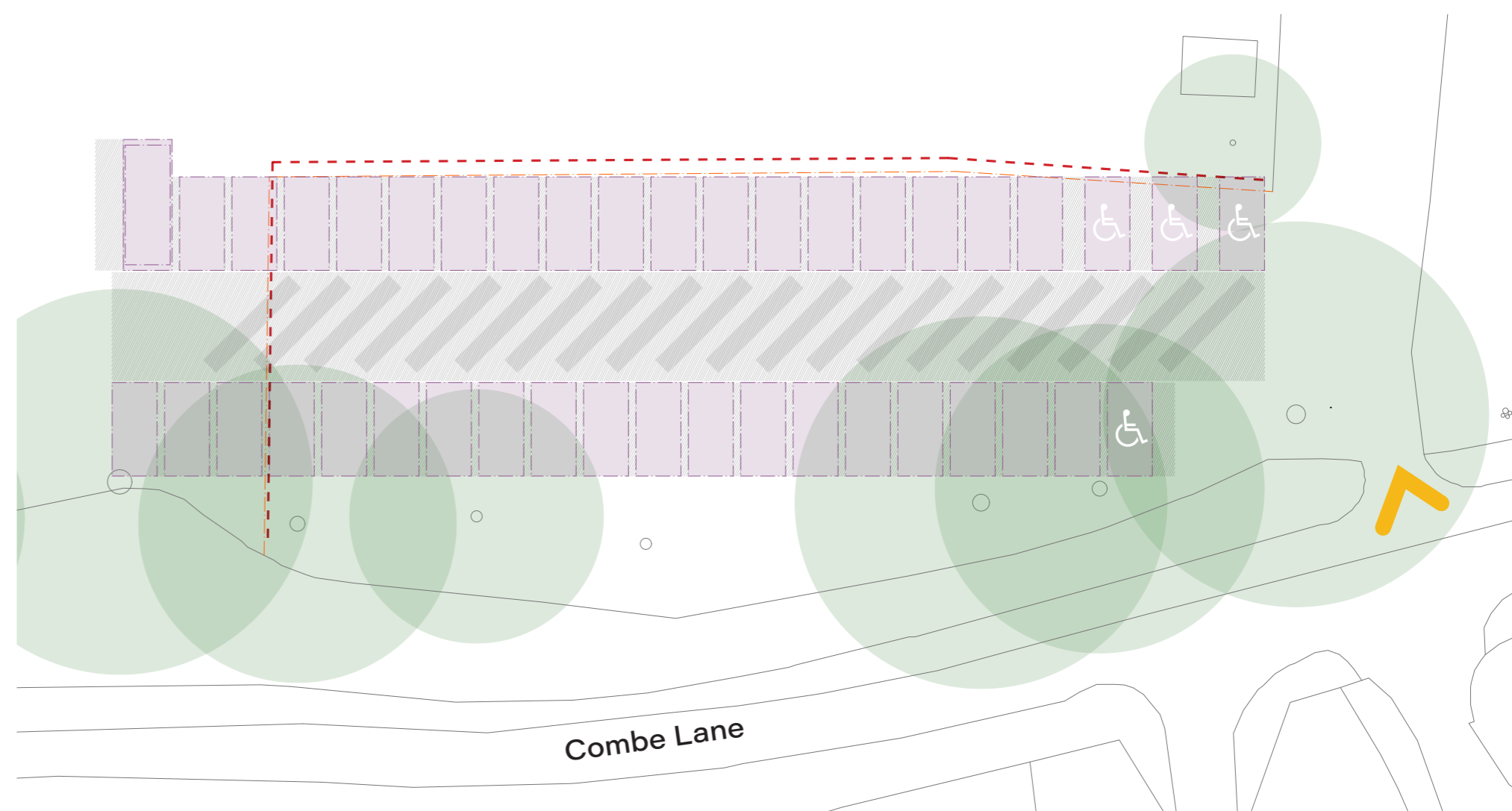
Site Access

- The vehicular entrance and car park are located to the South East corner of the site
- A footpath from the southern part of the village arrives on Combe Lane opposite the South East corner of the site
- A pedestrian entrance to the site is situated opposite the public footpath on Combe Lane
- Improving the pedestrian entrances on both the southern corners of the site will encourage pedestrians to enter here instead of the vehicular entrance
- The footpath along the South boundary of the allotment plots could be improved for better pedestrian connectivity
- Providing good levels of cycle parking will encourage visitors to come by bicycle to reduce the number of cars on site and promote active lifestyles and well-being

Car Parking Option

Improved layout to the car park will provide:

- 40 parking spaces (4 of which are disabled parking bays)
- 1 dedicated space for the 17 seater mini bus.
- All parking bays are spaced 0.4m from each other to cater for larger modern cars and give more space to open doors.
- The parking bays are set out in two linear runs with a central circulation zone.



- 1 x 17 Seater Mini Bus parking bay (2.6m x 7.0m)
- 4 x Disabled Parking Bays
- 36 x Parking Bays (2.4m x 5.0m)

- Key**
- Vehicular Entrance
 - Car Parking Spaces
 - Surrounding Trees
 - Circulation Zone
 - Original car park perimeter



Site Masterplan

Design-led masterplan proposal that inspires Chiddingfold to enjoy sport and recreation.

Site Masterplan

Key Site Improvements

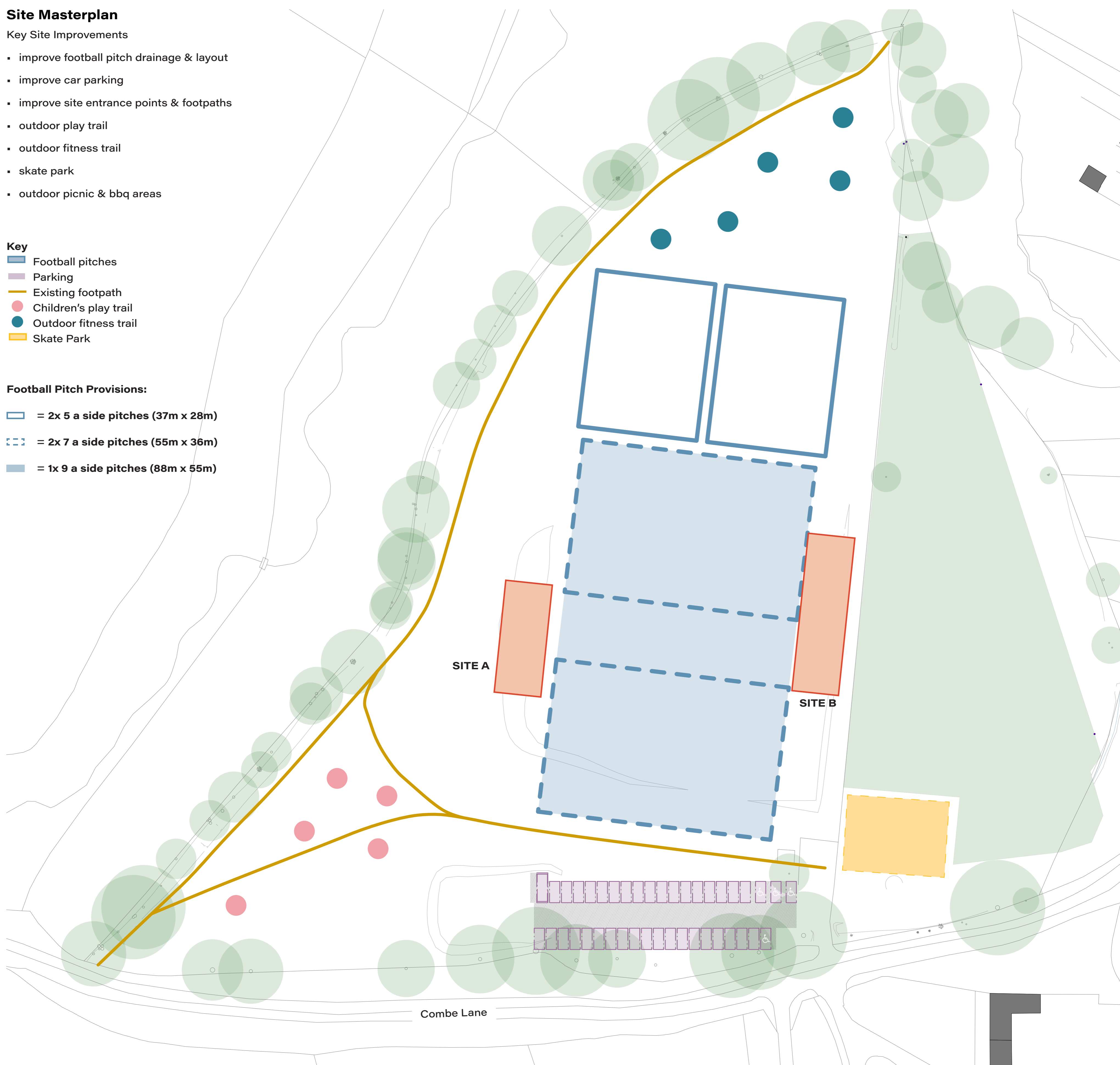
- improve football pitch drainage & layout
- improve car parking
- improve site entrance points & footpaths
- outdoor play trail
- outdoor fitness trail
- skate park
- outdoor picnic & bbq areas

Key

- Football pitches
- Parking
- Existing footpath
- Children's play trail
- Outdoor fitness trail
- Skate Park

Football Pitch Provisions:

- = 2x 5 a side pitches (37m x 28m)
- = 2x 7 a side pitches (55m x 36m)
- = 1x 9 a side pitches (88m x 55m)

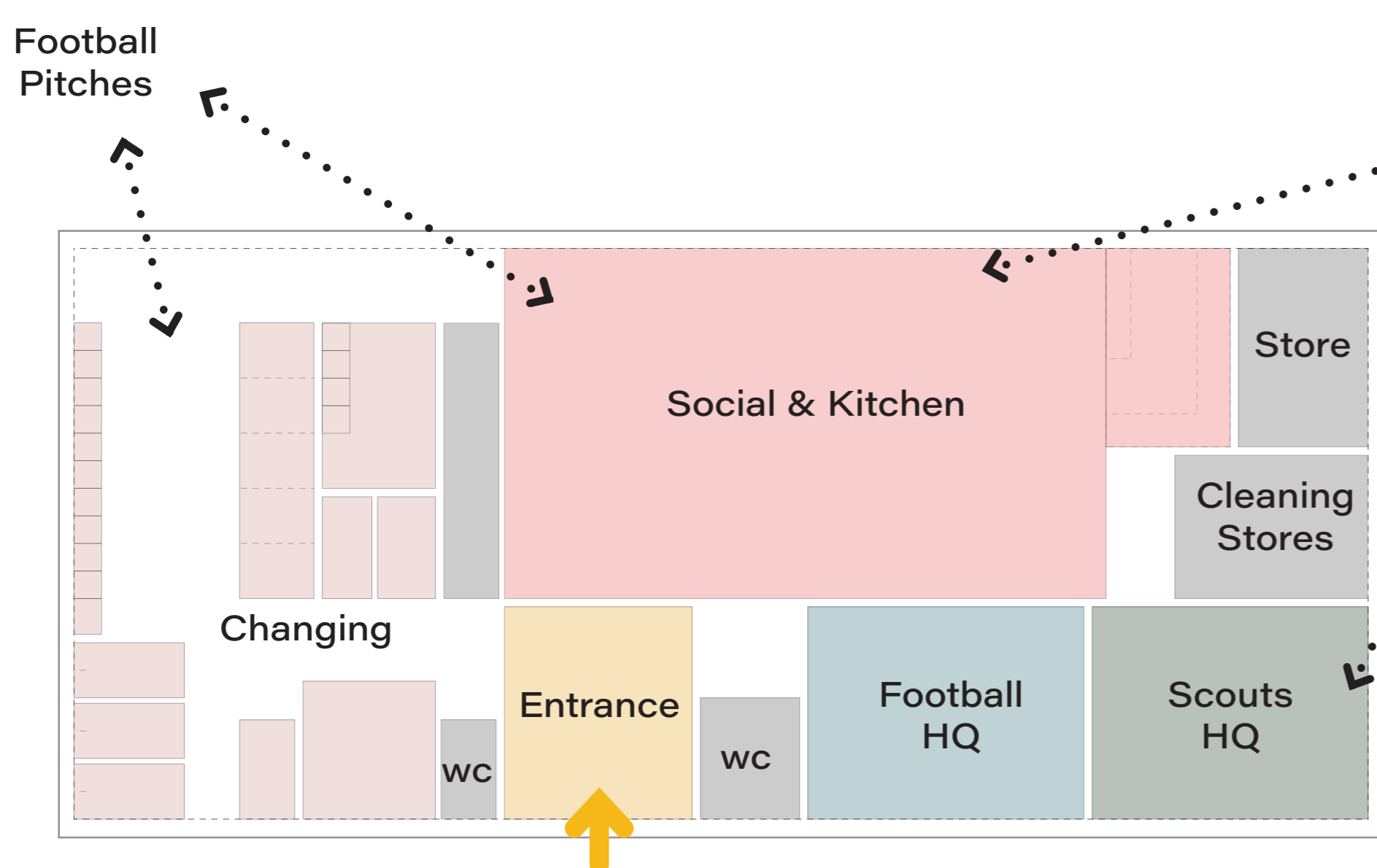




Accommodation

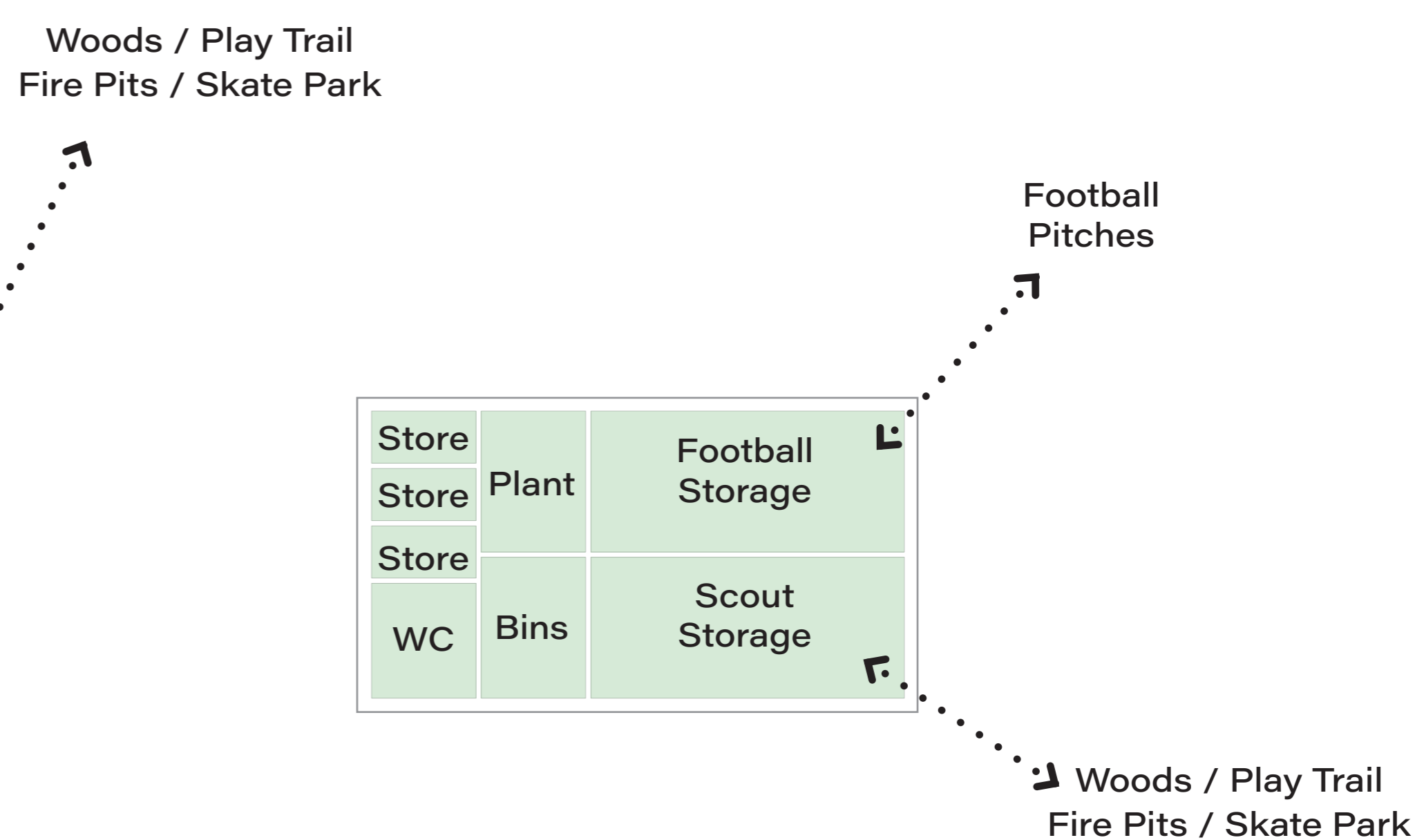
High quality facilities that support the Youth Football Club and Scouts Club and the wider Chiddingfold youth community.

Indicative Spatial Arrangement



Key Internal Spatial Accommodation Diagrams
scale 1:100

Indicative Storage Spatial Arrangement



Key External Storage Areas & Connections Diagram
scale 1:100

Accommodation Requirements

The schedule of accommodation has evolved from discussion with the project working group and each user representative.

The level of changing facilities has been developed following feedback from both the Football Foundation and Surrey Football Association.



Precedent images of high-quality internal structure

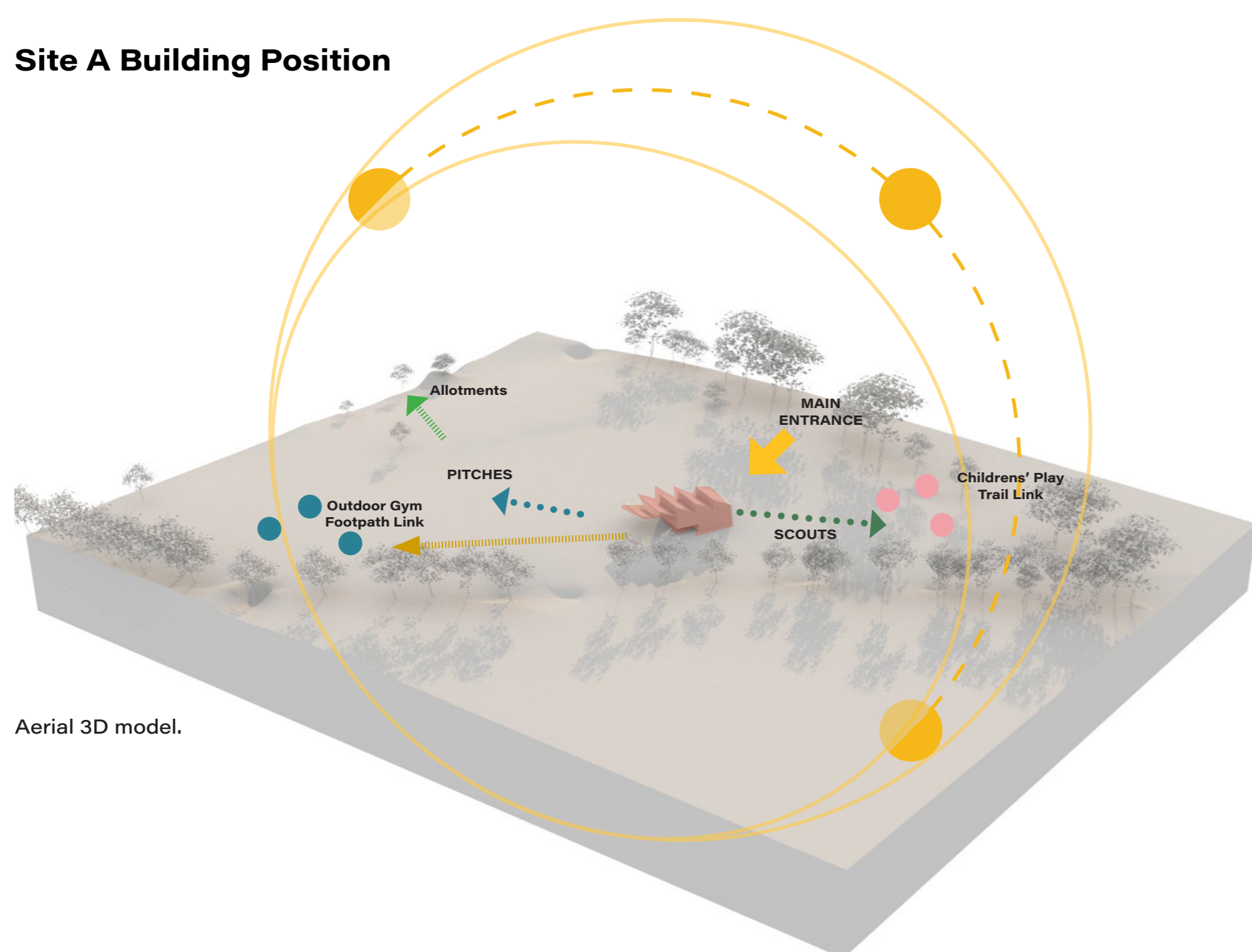
<p>Entrance visible / welcoming / spine of the building linking into other key areas (12sqm)</p>	<p>Football Club's Storage easy access to pitches (15sqm)</p>
<p>Club Room Social Space light / central hub for all / connects out to pitches (70sqm)</p>	<p>Scout's Storage easy access to external spaces & parking (15sqm)</p>
<p>Kitchen Simple kitchen for light refreshments / internal servery / external servery hatch (8sqm)</p>	<p>Small Store Rooms For Hire? 3 x 2sqm lockable stores for hire (6sqm)</p>
<p>Football Club HQ Office & First Aid football only office room and first aid (20sqm)</p>	<p>WC 1 x fully accessible WC (4sqm)</p>
<p>Scout HQ Office & First Aid informal small gatherings / scout office / scout first aid (20sqm)</p>	<p>Plant (5sqm)</p>
<p>Scout Hall - could this be shared light / central hub / connects out to play areas and fire pits (100sqm)</p>	<p>Bin Enclosure (5sqm)</p>
<p>Changing Room 1 shared changing room with WCs and cubicle showers (30sqm each)</p>	<p>Cycle Parking Secure cycle parking to promote activity and well-being and reduce the number of cars on the site and help ease the car parking requirements.</p>
<p>Umpire Changing Room changing / WC / shower (10sqm)</p>	<p>Club Room Storage Storage for tables and chairs</p>
	<p>Internal Back Of House Spaces WCs facilities Cleaners storage User storage cupboards</p>

Key Building Accommodation :

Building Placement

Presenting two options for the position of the new community pavilion building.

Site A Building Position



Aerial 3D model.

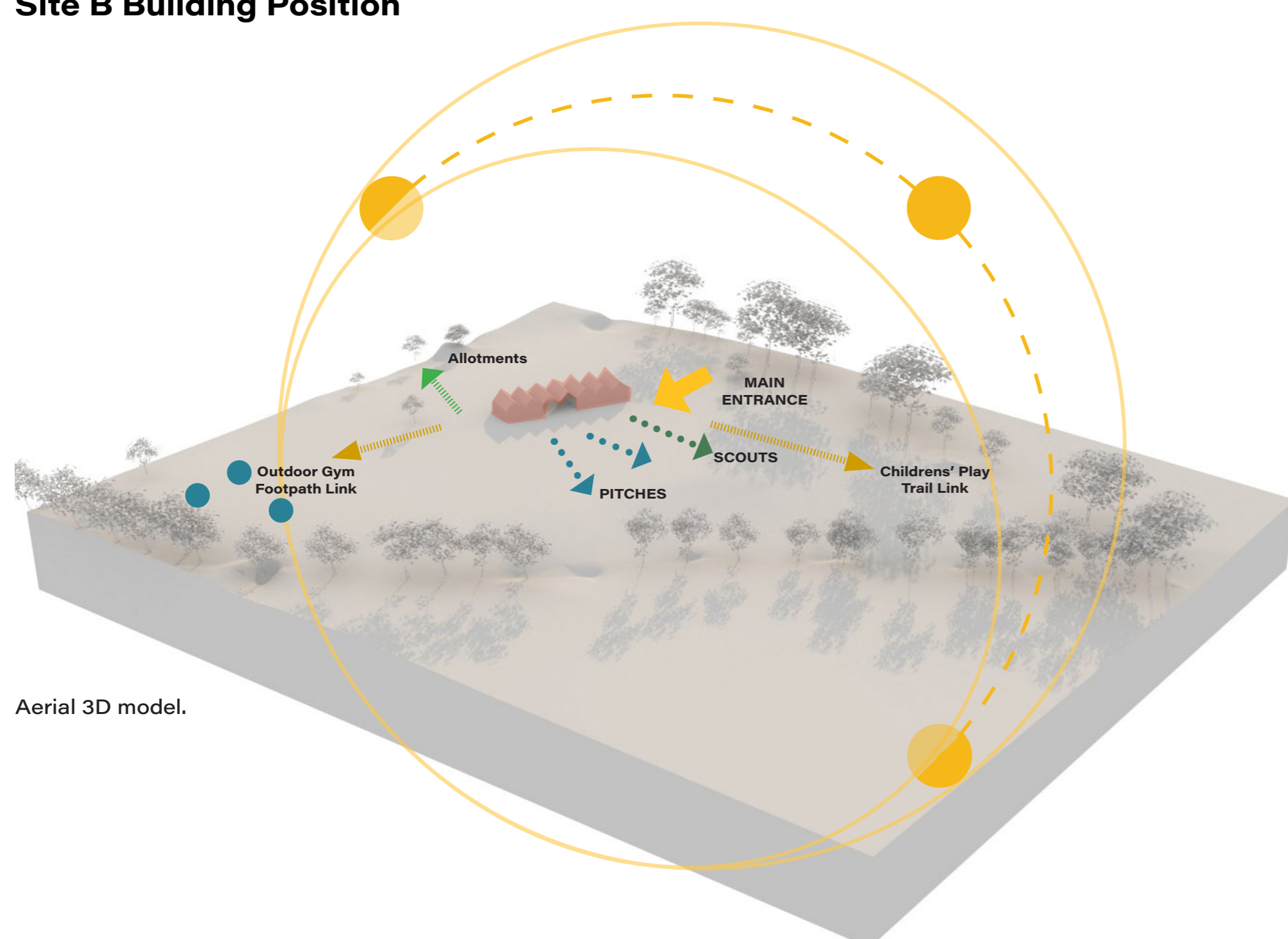


Illustrative sketch

Option Pros & Cons

- ✓ Site slope allows for building on two levels whilst reducing massing
- ✓ Main entrance facing car park and arrival
- ✓ Direct access to pitches at higher level with views across to all pitched
- ✓ Scouts access at lower level with links directly out to play trail & lots of south facing sunlight
- ✓ Footpath to play trail and outdoor gym footpath runs past building
- ✓ Morning and early afternoon sunlight
- ? Evening sunlight needs to be brought into the space through rooflight or openings

Site B Building Position



Aerial 3D model.



Illustrative sketch

Option Pros & Cons

- ✓ Building all on one level
- ✓ Main entrance facing car park and arrival
- ✓ Direct access to pitches with good view to all pitches
- ? Scouts access with footpath link to play trail but further distance
- ✓ Footpath with link up to outdoor gym
- ✓ Proximity to allotments
- ? Pitches moved west to accommodate building footprint
- ✓ Afternoon and evening sunlight
- ? Morning sunlight to be brought into the space with rooflights



Next steps >>>

Community project. Have your say...

- Community Engagement**
- We welcome feedback on the proposals and invite you to complete our short questionnaire
 - Engagement feedback analysis

- Scheme Design**
- Develop pavilion building layouts and massing designs with community feedback

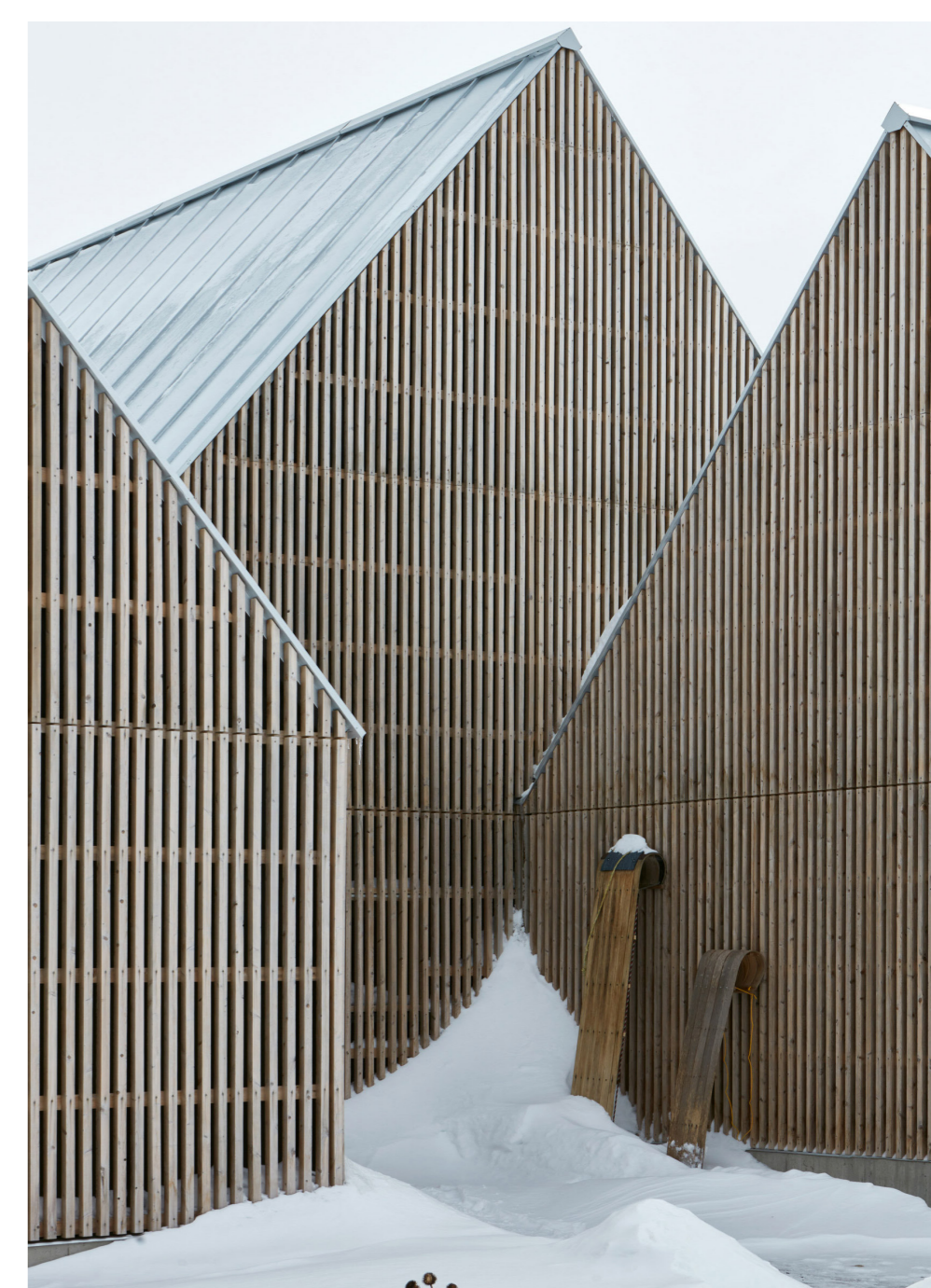
- Pre-application Advice**
- Submit pre-application advice from the local Planning department

- Scheme Design**
- Develop designs following pre-application planning advice
 - Explore pavilion and site character and quality through material selection

- Community Feedback**
- Share site and pavilion designs to get feedback and input from the community

- Scheme Design**
- Develop detailed site and pavilion designs with community feedback

- Planning Application**
- Submit a full planning application for site and pavilion building



Precedent images of high-quality hut style buildings

Thank you for visiting and giving feedback. This is invaluable to the evolution of the project.

To follow and keep up to date with the project please visit:
www.chiddingfold.com/combecommonrecreationground

